



DISTINCTIVE DESIGN HOMES

BY RUSTIC TOUCH

About Distinctive Design Homes by Rustic Touch

Antony and Debra Turner have been designing and building award winning homes in the Central Coast & Hunter regions since they founded Rustic Touch in 1986.

As active members of the Building Designers Association, Housing Industry Association and Master Builders Association, Antony and Debra are up to date with legislation changes, innovative design concepts and industry materials.

Distinctive Design Homes was created to simplify the process of creating a master built and designed home for those who want something a little different.

Our aim is to create a quality 'Healthy Home'. To achieve this, our designs are influenced by energy efficiency, sustainable housing and Feng Shui principles.

What makes a 'Healthy Home?'

- 1 Good cross ventilation
- 2 Use of thermal mass
- 3 Using products with low formaldehyde emissions
- 4 Careful placement of energy source
- 5 Good zoning for heating and cooling
- 6 Good use of natural light
- 7 Prevention of moisture transfer in external walls
- 8 Use of sustainable building products





Distinctive Design Homes

Whilst creating a custom design can be an enjoyable experience, it can also be a long and drawn out process, which can take up to a year in planning.

Distinctive Design Homes features projects designed and built by Rustic Touch which are tried and true. These designs are readily available, simplifying the planning process, and providing an exciting experience where the client can get creative in selecting the latest trends to customise their desired home.

Whether you choose to build a *Banksia*, *Grevillea*, *Frangipani* or *Lilly Pilli* design, our aim is to produce a quality 'Healthy Home'. Distinctive Design Homes encapsulates all the principles featured in a custom designed Rustic Touch home.





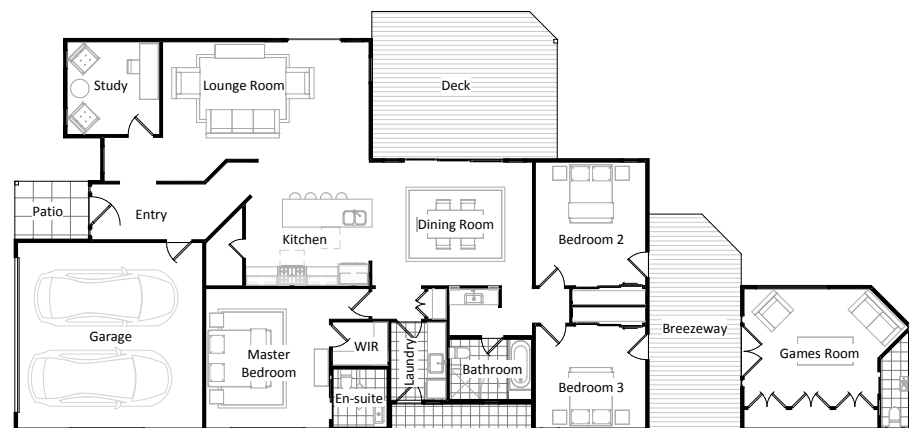
Banksia

This spacious home is perfect for the busy family, suiting a flat site with an eastern frontage.

Housing three bedrooms, study and separate games room, the **Banksia** is a great design for the growing family.

Form and function provide for easy living with highlight windows that allow winter solar access, whilst achieving contemporary ambience.

This is a perfect 'Healthy Home' for you and your family, and incorporates passive solar design and sustainable construction, zoning the external areas to fit with the accompanying internal areas.



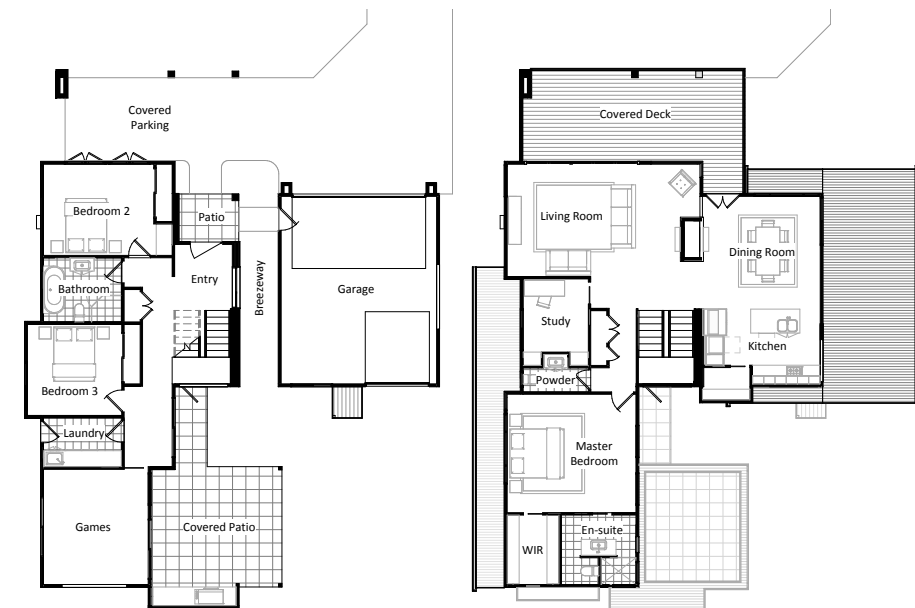
Frangipani

This two storey home has an amazing street appeal which also creates a very comfortable passive solar lifestyle.

Skillion roofs accommodate highlight windows for thermal control and utilisation of natural light.

This 'Healthy Home' is designed and constructed using the best of passive solar design and sustainable construction, zoning the external areas to fit with the accompanying internal areas.

With quality fittings and features **Frangipani** is pleasing to the eye internally and externally. This is a comfortable home to live in all year round.





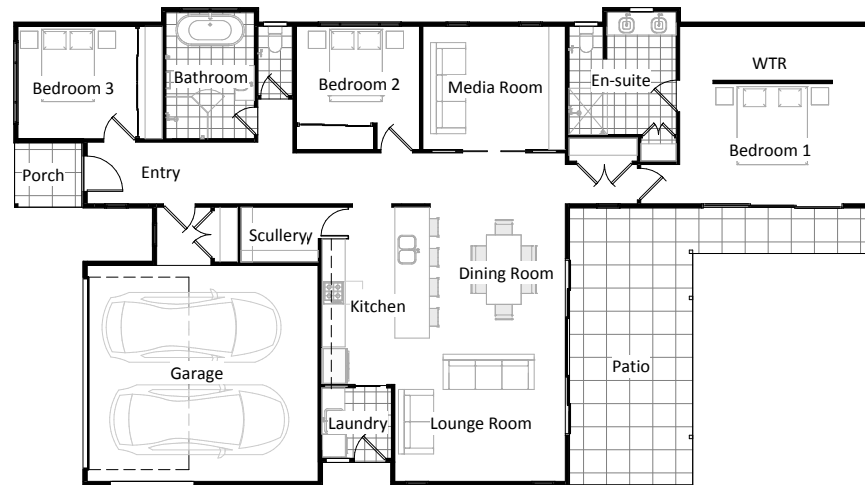
Grevillea

This single storey home is not only a great entertainer, it also fits the block comfortably.

This three bedroom plus media room home will suit your needs whether you are just starting out, eager to retire or the 'quiet getaway' type.

Utilising sustainable construction and the best of passive solar design methods, *Grevillea* is a wonderful 'Healthy Home.'

This stylish and comfortable design with its thoughtful layout includes quality fittings and features, thereby truly combining form and function to result in the perfect home.



Lilly Pilli

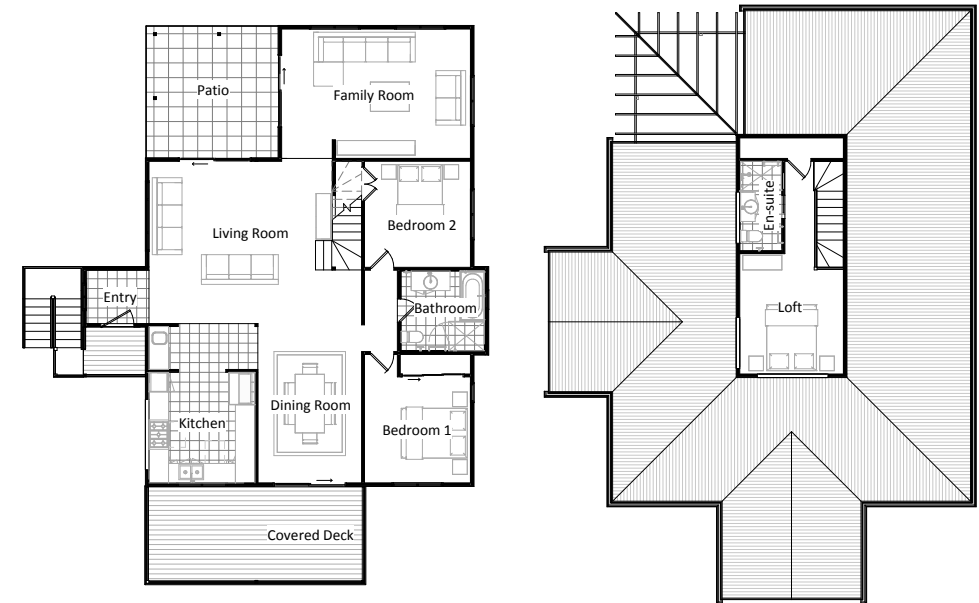
Lilly Pilli is the perfect home for a sloping site and sits comfortably in a leafy environment.

This three bedroom home features one or two bathroom options, suiting the average family.

The separate family room accommodates for those teenage years or private times.

Full of ambience, this cosy home creates a comfortable lifestyle for the family that likes to be simply different.

Layouts vary to achieve passive solar design.



The Distinctive Design Homes Process

Whichever design you choose, we can assure you that whilst you are building your new home, you can expect the utmost attention to detail at all times.



Initial Meeting

During our first consultation we aim to discover how we can best help you to achieve your desired outcome.

By discussing what you want and need in your new home, we will help you discover a Distinctive Design Home which best suits your lifestyle, land topography and aspect. Once you have selected your Distinctive Design Home, we are ready to move onto the next stage... which includes making your home your own.



Selections

Your selected Distinctive Design Home can now be modified to suit your requirements. Once your design is finalised and deposit is paid, we will engage specialist consultants who will provide reporting to assist in preparing your new home tender.

After meeting with our design consultant you will select your home's colours, fixtures, appliances and any additional features you may require.

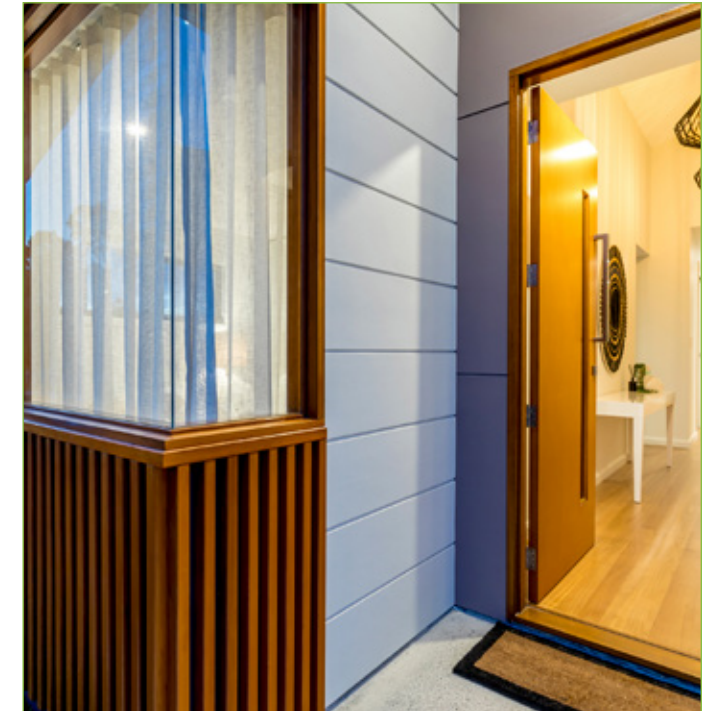


Tender & Approvals

With your finalised design, we will present your tender package.

In addition to the consultant's reports, we will prepare your council applications and manage the submission and approvals process.

You are able to relax throughout this process, knowing that we have everything taken care of for you.



Construction

Once we have received council approval we can now start construction.

Rustic Touch will manage the construction stage ensuring the integrity of the design and specific details are met.

All work will be carried out to the highest standard and will comply with Building Codes of Australia and Work Cover policies.



DISTINCTIVE DESIGN HOMES

BY RUSTIC TOUCH

Contact Details

p (02) 4389 1551 | **f** (02) 4311 2327

e distinctive@rustictouch.com

w distinctivedesignhomes.com.au