

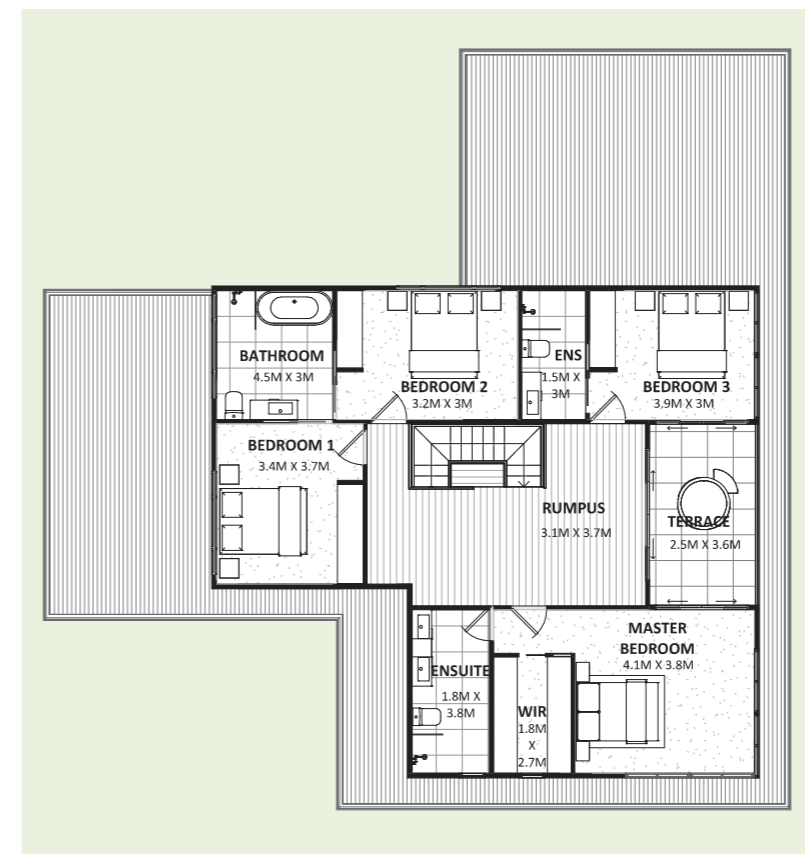


DISTINCTIVE DESIGN HOMES
BY RUSTIC TOUCH

Acacia



Ground Floor



First Floor

The Acacia is a classy yet minimalist home which sits comfortably in its environment.

This home is to take full advantage of both view and solar aspect.

With a minimal pitched roof and extended eaves, the roof floats gently over the home and shades from the summer sun.

This adaptable home can accommodate from 3 to 5 bedrooms and has outdoor connectivity on both levels.

This Healthy home is designed using the best of passive solar design maximising cross ventilation and natural light.

With quality fittings and features this home will fill all your needs and will feel like it's designed just for you.

5 4 2

Garage	36.0 m ²
Living Area	174.5 m ²
Outdoor Area	31.8 m ²
Wet Area	34.8 m ²
Grand Total	277.1 m²

Minimum block width 21.600 m
*Subject to site inspection

T 02 4389 1551 or 02 4973 1031

E distinctive@rustictouch.com

W www.distinctivedesignhomes.com.au