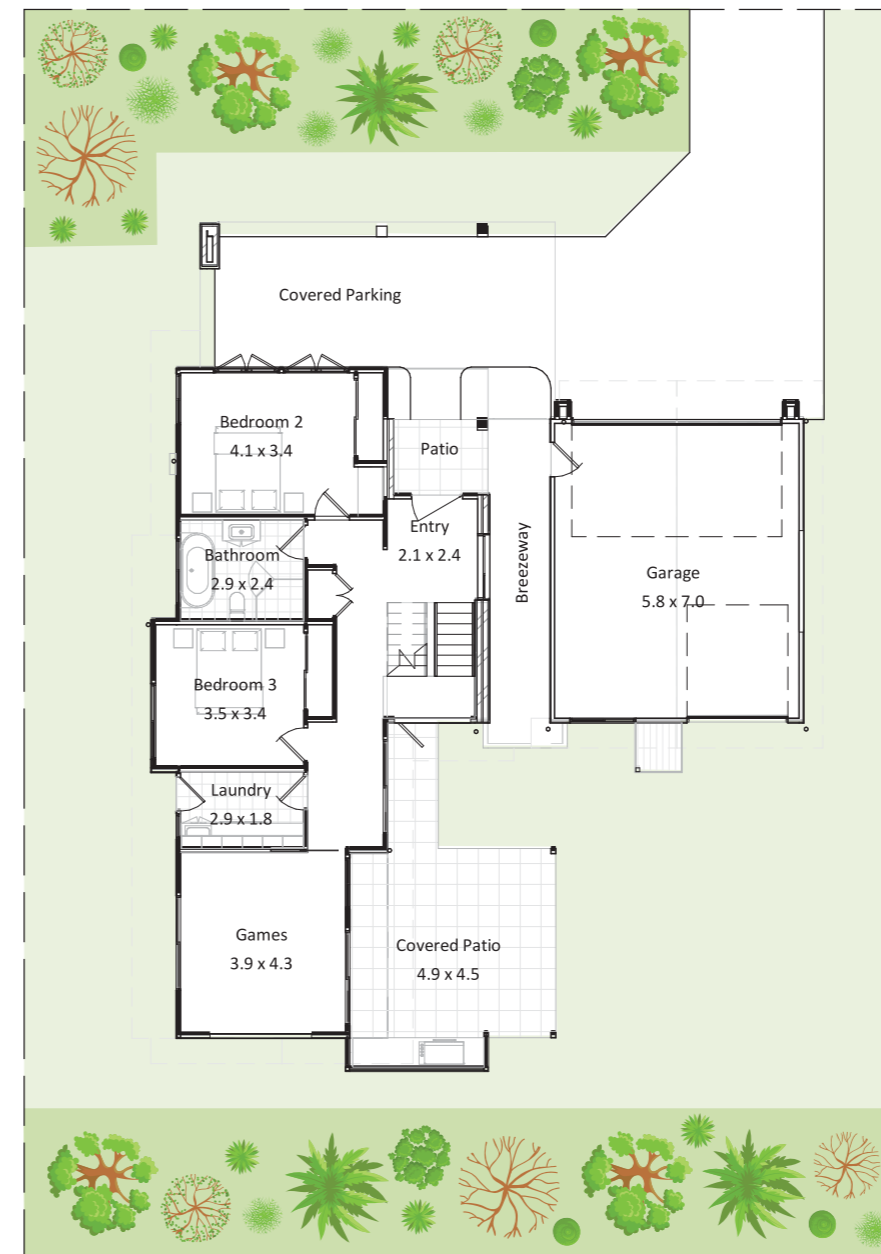
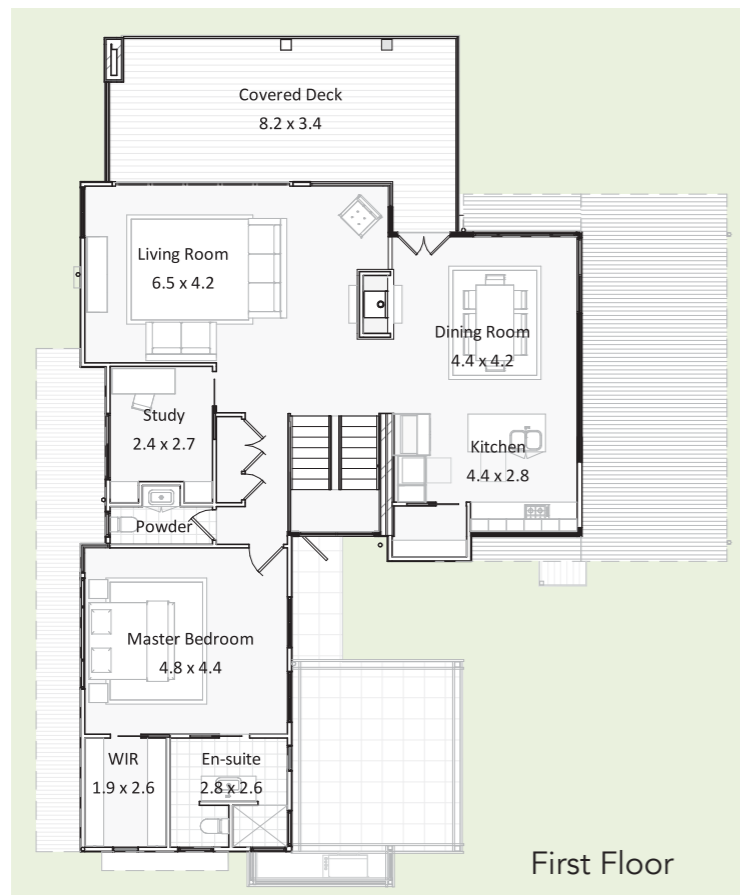




DISTINCTIVE DESIGN HOMES  
BY RUSTIC TOUCH

# Frangipani



This two storey home has an amazing street appeal which also creates a very comfortable passive solar lifestyle.

Skillion roofs accommodate highlight windows for thermal control and utilisation of natural light.

This 'Healthy Home' is designed and constructed using the best of passive solar design and sustainable construction, zoning the external areas to fit with the accompanying internal areas.

With quality fittings and features Frangipani is pleasing to the eye internally and externally. This is a comfortable home to live in all year round.

3 2 2

Covered Parking	20.2 m <sup>2</sup>
Garage	40.9 m <sup>2</sup>
Living Area	170.3 m <sup>2</sup>
Outdoor Area	70.7 m <sup>2</sup>
Wet Area	22.1 m <sup>2</sup>
<b>Grand Total</b>	<b>324.2 m<sup>2</sup></b>

Minimum block width 17.540 m  
\*Subject to site inspection

T 02 4389 1551 or 02 4973 1031

E [distinctive@rustictouch.com](mailto:distinctive@rustictouch.com)

W [www.distinctivedesignhomes.com.au](http://www.distinctivedesignhomes.com.au)