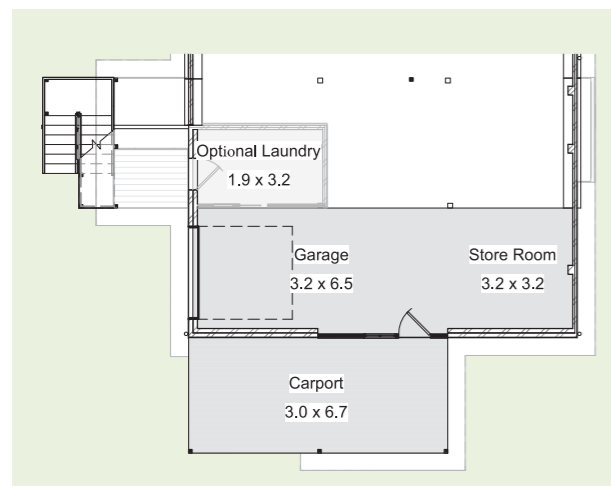
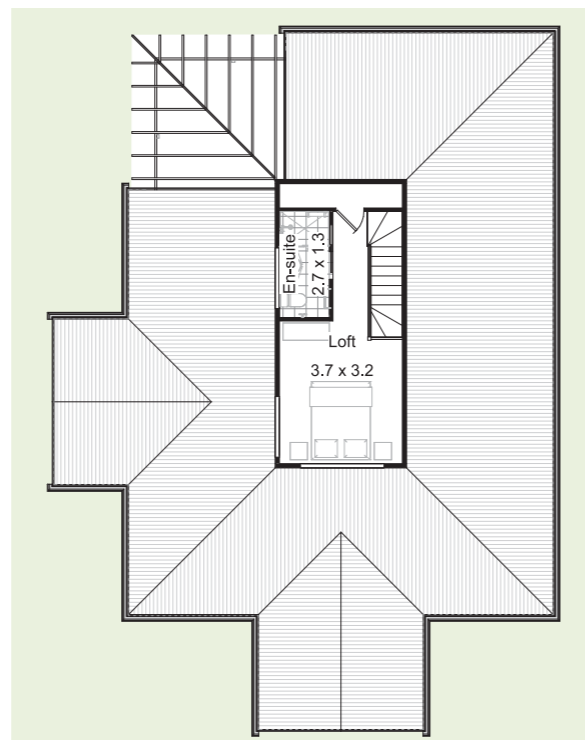


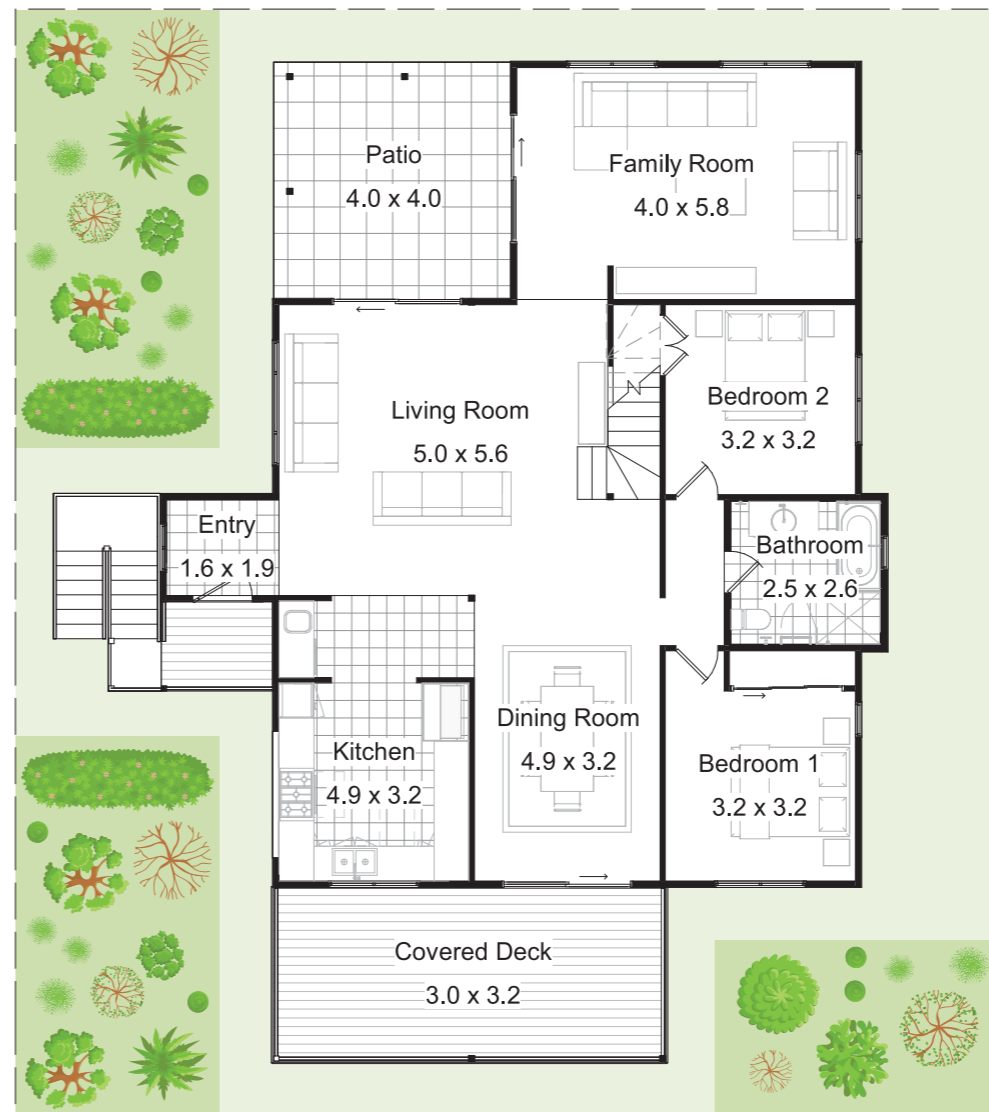


DISTINCTIVE DESIGN HOMES
BY RUSTIC TOUCH

Lilly Pilli



Ground Floor



Lilly Pilli is the perfect home for a sloping site and sits comfortably in a leafy environment.

This three bedroom home features one or two bathroom options, suiting the average family.

The separate family room accommodates for a myriad of options including a teenage getaway, games or movie room.

Full of ambience, this cosy home creates a comfortable lifestyle for the family that likes to be simply different. Layouts vary to achieve solar passive design.

3 2 2

Garage	50.9 m ²
Living Area	129.5 m ²
Outdoor Area	36.5 m ²
Wet Area	16.4 m ²
Grand Total	233.3 m²

Minimum block width 16.400 m
*Subject to site inspection

T 02 4389 1551 or 02 4973 1031

E distinctive@rustictouch.com

W www.distinctivedesignhomes.com.au