



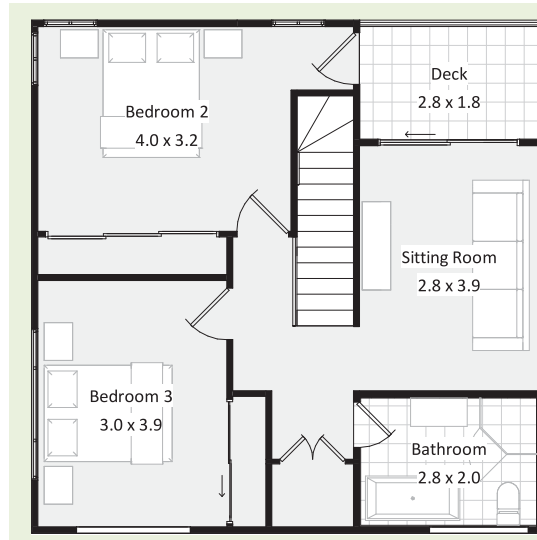
DISTINCTIVE DESIGN HOMES
BY RUSTIC TOUCH

Tea Tree



Option 2

First Floor



Ground Floor

This comfortable home is suited to the smaller lots and can morph from a classic pitched roof to a modern skillion style. Which as you can see gives the home a new personality.

With the master bedroom and ensuite on the ground floor along with the kitchen, dining and lounge, Tea Tree is suited to all stages of your life. Stacking doors lead from the dining room to the covered BBQ area. Upstairs are two more generous bedrooms, the main bathroom and a sitting room with a covered deck. The double garage has a drive though single door at the rear, giving easy access to the backyard.

Sitting comfortably on a small block, this home has all you need. Layouts vary to achieve solar passive design.

3 2 2

| | |
|--------------------|----------------------------|
| Garage | 34.2 m ² |
| Living Area | 107.9 m ² |
| Outdoor Area | 19.6 m ² |
| Wet Area | 11.1 m ² |
| Grand Total | 172.8 m² |

Minimum block width 16.300 m
*Subject to site inspection

T 02 4389 1551 or 02 4973 1031

E distinctive@rustictouch.com

W www.distinctivedesignhomes.com.au