



DISTINCTIVE DESIGN HOMES  
BY RUSTIC TOUCH

# Grevillea



Elevation



Floor Plan

This single storey home is not only a great entertainer, it also fits the block comfortably.

This three bedroom plus media room home will suit your needs whether you are just starting out, eager to retire or the 'quiet getaway' type.

Utilising sustainable construction and the best of solar passive design methods, Grevillea is a wonderful 'Healthy Home'.

This stylish and comfortable design with its thoughtful layout includes high quality inclusions and finishes which elevate the design to a whole new level of style.

3 2 2

Garage	35.8 m <sup>2</sup>
Living Area	121.5 m <sup>2</sup>
Outdoor Area	31.1 m <sup>2</sup>
Wet Area	21.0 m <sup>2</sup>
<b>Grand Total</b>	<b>209.4 m<sup>2</sup></b>

Minimum block width 14.415 m  
\*Subject to site inspection

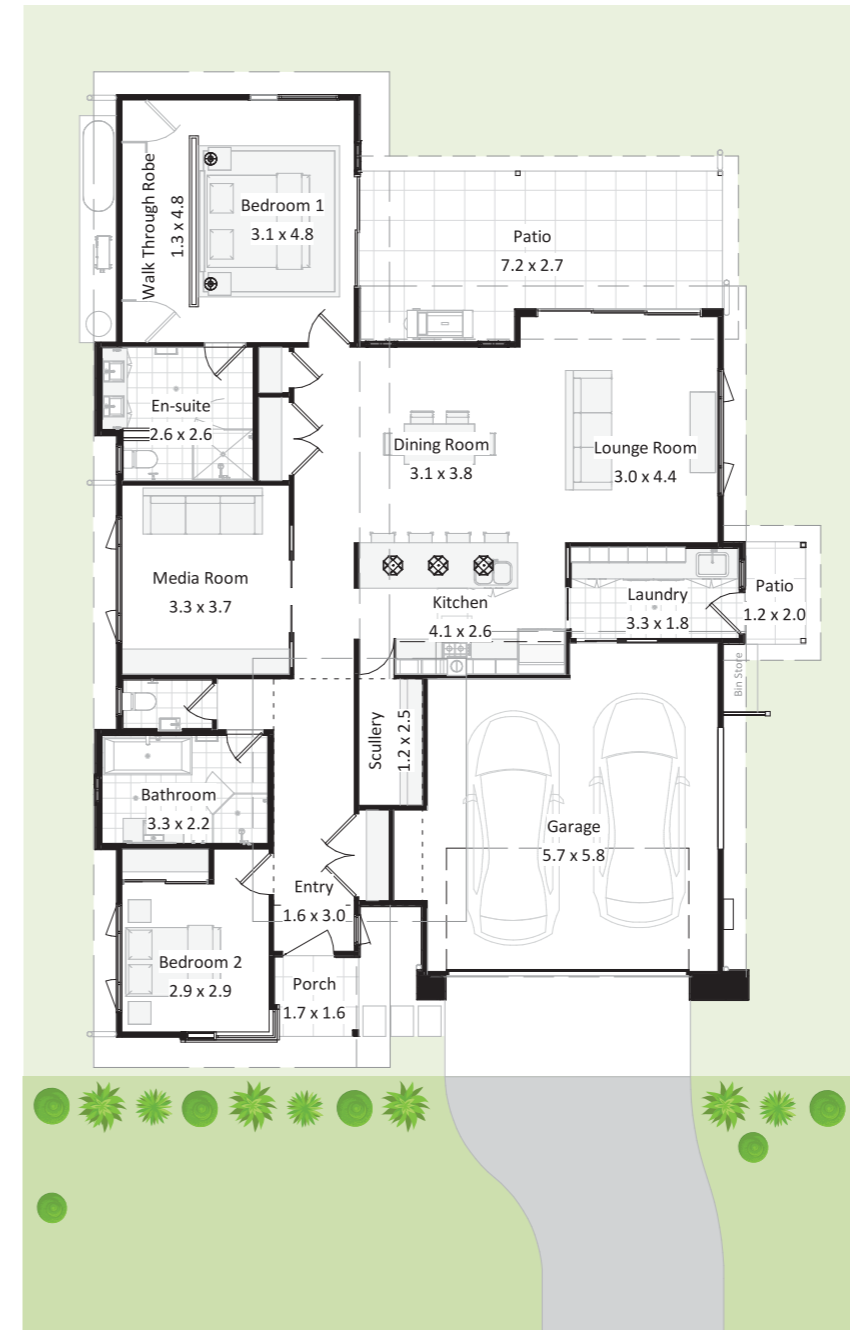
T 02 4389 1551 or 02 4973 1031

E [distinctive@rustictouch.com](mailto:distinctive@rustictouch.com)

W [www.distinctivedesignhomes.com.au](http://www.distinctivedesignhomes.com.au)



# Grevillea II



Grevillea II, a single storey home which is great for the entertainer.

The central kitchen, opening to the living and leading onto the patio, the open space can accommodate the biggest family Christmas.

The master bedroom is an ideal retreat, with stacking doors that open out to the patio, a spacious en-suite and walk through robe.

Available with both single and double garage options.

Layouts vary to accommodate Passive Solar Design.



Garage	36.7 m <sup>2</sup>
Living Area	108.7 m <sup>2</sup>
Outdoor Area	26.4 m <sup>2</sup>
Wet Area	22.7 m <sup>2</sup>
<b>Grand Total</b>	<b>194.5 m<sup>2</sup></b>

Minimum block width 16.100 m  
\*Subject to site inspection